

Other Information

The town of Larnaca is just 15 minutes drive from Pyla Resort, with it's collection of restaurants, shops and bars. The sandy beach is even closer and Pyla has a good selection of quality restaurants, bars, cafes and shops.

Larnaca being the home of the main international airport gives holiday makers their first glimpse of Cyprus. Ideally situated in the south east of the island and close to the motorway network, it's ideal for exploring the whole island.

Every summer Larnaca hosts a festival of music. Outdoor concerts take place in the courtyard of the medieval fort. Larnaca is a town with an easy going pace with strong links to the past

The remains of the ancient City 'Kingdom of Kition' are also worth a visit. For nature lovers the nearby salt lake is a favourite stop-over for thousands of migrating birds including flamingos.

Cyprus vehicles are driven on the left as in the UK and seatbelts must always be worn.

Larnaca offers large stretches of sandy beach that go on for miles and the two main local beaches are McKenzies and Dhekelia.



near Larnaca, Cyprus

Contact Details

Ken and Gill Skittrell

Telephone: + 44 (0) 1938 552280

Mobile: + 44 (0) 7908 039035

Email: skittrell@btinternet.com

**An exclusive 2 bedroom Penthouse
suite on the beautiful island of Cyprus**



“ONE ISLAND WITH A WHOLE WORLD OF OPTIONS”

Cyprus

Cyprus has a typical Mediterranean climate, warm and dry, with a little rainfall between November and March. In general, the island experiences mild winters and dry hot summers which are separated by short autumn and spring seasons.



Cyprus is an island of legends with previous visitors including people such as Alexander the Great and Cleopatra and it effortlessly marries European culture with ancient enchantment.



You will discover a compact world of alluring beaches and fragrant mountain peaks, vineyards studded with olive trees and ancient ruins that stir the imagination, citrus groves and old stone villages where sweet wine flows as freely as conversations at the local Taverna.

Pyla

This brand new luxury gated complex of Pyla Resort is an ideal retreat for those who enjoy peace and tranquility away from the crowds. An uncrowded resort, but close enough for those that wish to venture into the busier resort of Larnaca.

Pyla Resort is built "with luxury in mind" offering an intimate location, whilst also being close to all the amenities you would expect from a first class resort.

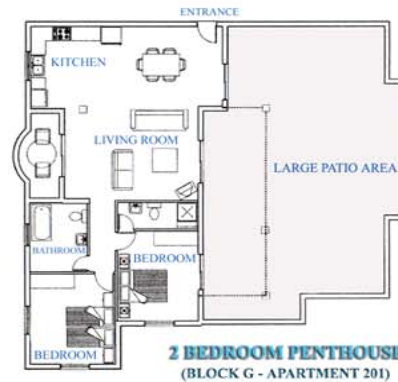


At Pyla front (5 mins drive away), you will find many bars to choose from, all which offer a different atmosphere where you can soak up the local culture. In addition, the promenade in Larnaca also has a good selection to choose from. You can also find an almost never ending number of good restaurants whatever your palate or budget. Fresh fish and seafood as well as meat dishes are the specialities.



Penthouse Suite

The Penthouse provides an ideal base from which you can easily explore the beautiful island of Cyprus. Furnished to an exceptional standard with everything to make you feel "home away from home."



The accommodation includes a luxury fitted kitchen area complete with fridge/freezer, oven and microwave. There is a washer/drier, iron, ironing board & hair dryer. There are 2 large double bedrooms, one with an ensuite.

The modern, spacious open-plan living area leads through to the very large private patio area (approx 30ft x 40ft) where you can enjoy basking on one of the 340 days of sunshine that Cyprus enjoys each year. On the patio area there are sunbeds, table & chairs, a large patio umbrella and when the mood takes you, a gas bar-b-que. The swimming pool area will help you relax and unwind and the tennis court is available for the sports-minded.



Rates (per week)

Accommodation	Feb 1 - Jun 30	Jul 1 - Oct 25	Oct 26 - Dec 31
2 Bed Penthouse	£400	£550	£400

All prices are based on per 7 night duration.

A £50 supplement applies for stays including Christmas and New Year.

A £100 deposit is required to secure your booking. Balance payable 8 weeks prior to arrival. Special offers are sometimes available at selected times of year - Call us now for more details.



Site Features and Facilities include:-

- Tennis Court
- Swimming Pool
- 4 -5 minutes walk to Pyla village
- 15 minutes to Larnaca
- Bars, Shops, Restaurants nearby
- Satellite Television and DVD
- Microwave and Washing Machine
- Air Conditioning